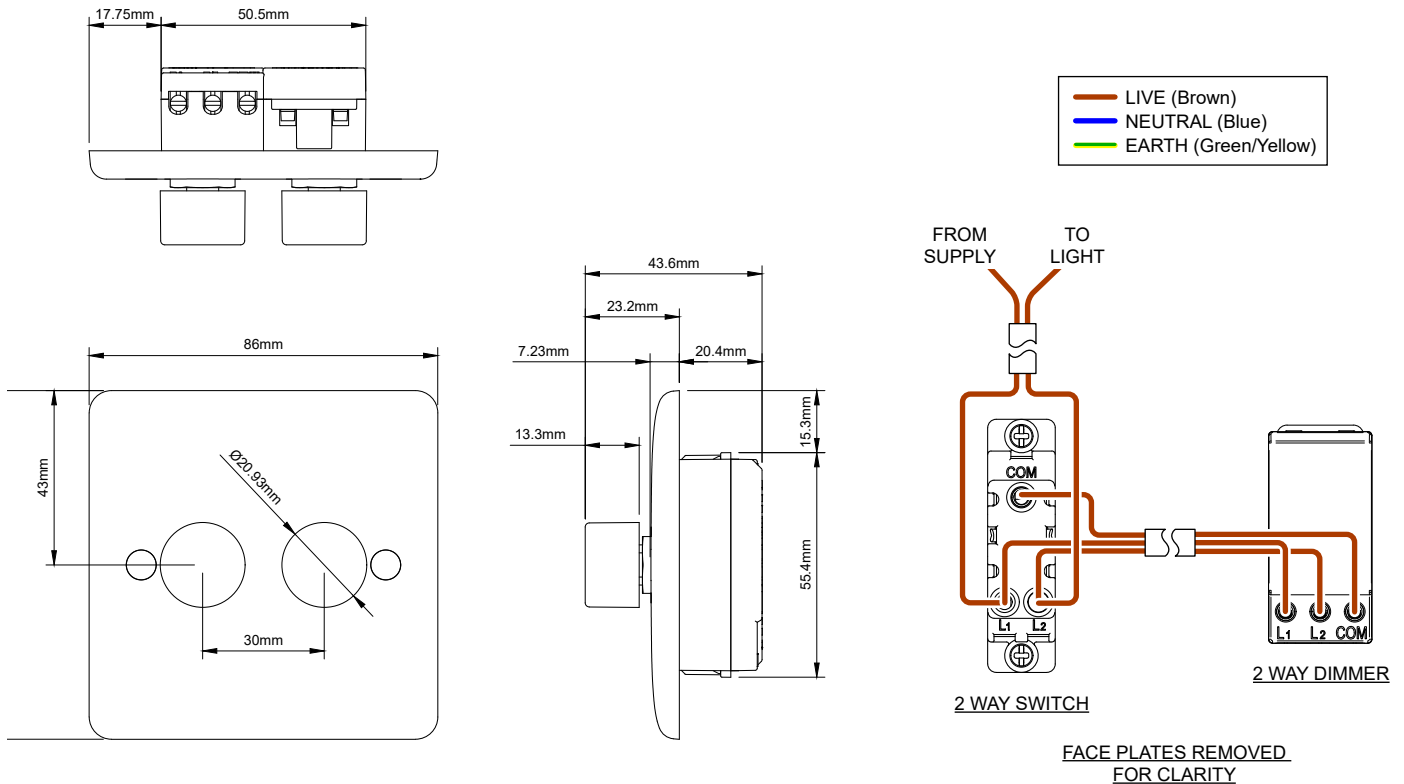


250W 2 Gang 2 Way Trailing Dimmer



TECHNICAL SPECIFICATION	
Standard(s)	BS EN 60669-2
Voltage Rating	200-250V~ 250W
Switch Type	Single Pole
Mounting Box Depth (Min)	35mm
Terminal Capacity	4 x 1.0mm ² , 4 x 1.5mm ² , 2 x 2.5mm ² , 1 x 4.0mm ²
Fixing Centres	60.3mm
Size	86mm x 86mm x 7mm (Plate thickness)
Product Class 1	Face plate does not need to be earthed
Ambient Operating Temperature	-5° to +40°C
Recommended Location	Internal Use Only
Maximum Installation Altitude	2000m
IP Rating	IP2XD
Mains Frequency	50hz - 60hz
Trademarks	The Lieber Company is a registered trade mark number: UK00003313578 Date: 26 May 2018