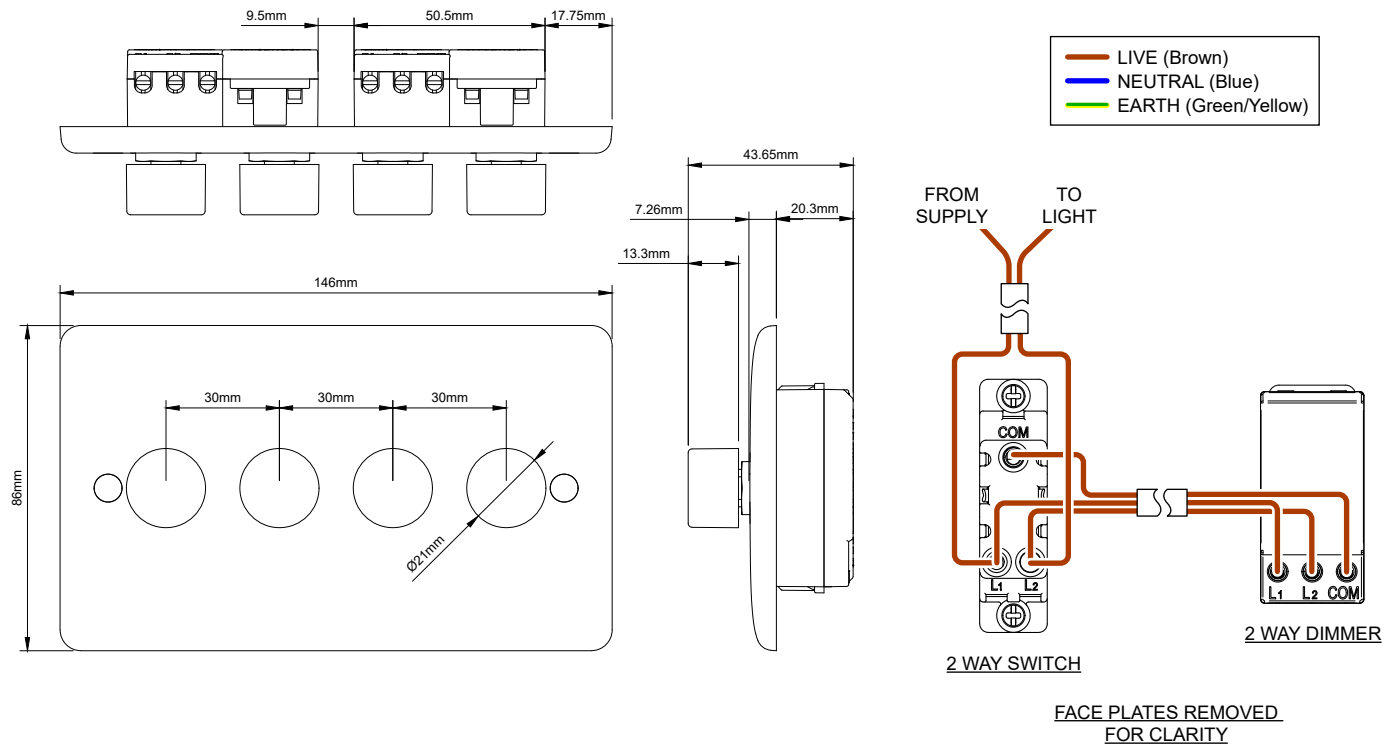


LTS724



250W 4 Gang 2 Way Trailing Dimmer



FACE PLATES REMOVED FOR CLARITY

TECHNICAL SPECIFICATION

Standard(s)	BS EN 60669-2
Voltage Rating	200-250V~ 250W
Switch Type	Single Pole
Mounting Box Depth (Min)	35mm
Terminal Capacity	4 x 1.0mm ² , 4 x 1.5mm ² , 2 x 2.5mm ² , 1 x 4.0mm ²
Fixing Centres	120.6mm
Size	146mm x 86mm x 7mm (Plate thickness)
Product Class 1	Face plate does not need to be earthed
Ambient Operating Temperature	-5° to +40°C
Recommended Location	Internal Use Only
Maximum Installation Altitude	2000m
IP Rating	IP2XD
Mains Frequency	50hz - 60hz
Trademarks	The Lieber Company is a registered trade mark number: UK00003313578 Date: 26 May 2018

All products listed conform to current British or European standard and the product information is correct at the time of going to press.

Illustrations and diagrams are reproduced within the limitations of reproduction and printing process and are not binding.

Due to manufacturing processes we cannot guarantee an exact colour match and shadings of certain finishes.

